

HAND HACKSAW BLADES

Normal Size (Length X Width X Thickness)		HSS - ALL HARD - 3905 - SANDCUT		HSS - BIMETAL - 3906 - SANDFLEX		PKT. QTY.
Inches	Millimeters	Teeth Per Inch (TPI)	HSS Rs. / Piece	Teeth Per Inch (TPI)	BIMETAL Rs. / Piece	
12 X 1/2 X 0.025	300 X 12.5 X 0.63	14, 18*, 24*, 32	78	14, 18*, 24*, 32	86	100

*Ordering Code - Grade - 300-TPI - 100

POWER HACKSAWS

Normal Size (Length X Width X Thickness)		HSS - ALL HARD - 3802 - SANDCUT		HSS - BIMETAL - 3809 - SANDFLEX		PKT. QTY.
Inches	Millimeters	Teeth Per Inch (TPI)	HSS Rs. / Piece	Teeth Per Inch (TPI)	BIMETAL Rs. / Piece	
12 X 1 X 0.050	300 X 25 X 1.25	10*, 14	339	10*, 14	311	10
14 X 1 X 0.050	350 X 25 X 1.25	6, 8*, 10*, 14	379	6, 8*, 10*, 14*	380	10
16 X 1 X 0.050	400 X 25 X 1.25	-	-	6, 10*, 14	563	10
14 X 1.1/4 X 0.062	350 X 32 X 1.60	6*, 10	643	6*, 10*	593	10
16 X 1.1/4 X 0.062	400 X 32 X 1.60	6*, 10	739	6*, 10*	733	10
17 X 1.1/4 X 0.062	425 X 32 X 1.60	-	-	6*, 10	984	10
18 X 1.1/4 X 0.062	450 X 32 X 1.60	6*, 10	817	6*, 10	760	10
18 X 1.1/2 X 0.80	450 X 38 X 2.00	6*, 10	1,118	6*, 10	1,166	10
21 X 1.1/2 X 0.80	525 X 38 X 2.00	4, 6*, 10	1,415	4, 6*, 10	1,423	10
24 X 1.1/2 X 0.90	600 X 38 X 2.00	-	-	4*, 6	1,554	10
24 X 2 X 0.100	600 X 50 X 2.50	4*, 6	2,765	4*, 6	2,589	10
28 X 2 X 0.100	700 X 50 X 2.50	4*, 6	3,216	4*, 6	3,281	5
30 X 2 X 0.100	750 X 50 X 2.50	4*	3,537	4*	3,828	5

*Ordering Code - Grade - Length (in mm) - Width (in mm) - Thickness (in mm) - TPI

ENGINEERING FILES

SIZE inch	FLAT 1-110/HAND 1-100			HALF ROUND 1-210			ROUND 1-230			SQUARE 1-160			THREE SQUARE 1-170			PACK QUANTITY
	Bastard	2nd Cut	Smooth	Bastard	2nd Cut	Smooth	Bastard	2nd Cut	Smooth	Bastard	2nd Cut	Smooth	Bastard	2nd Cut	Smooth	
4"	203*	248	281	382	412	432	258	299	335	299	315	328	306	329	340	10
6"	207*	281	312*	424*	455	488*	303*	320	343*	320*	328	345*	327*	343	382*	10
8"	208*	329	354*	541*	595	634*	339*	345	396*	330*	345	383*	434*	458	489*	10
10"	210*	344	436*	687*	803	846*	439*	460	494*	439*	460	494*	579*	611	658*	10
12"	316*	510	567*	941*	987	1,072*	555*	591	652*	555*	591	652*	725*	783	821*	5
14"	663	-	-	-	-	-	-	-	-	-	-	-	-	-	-	5

Ordering Code - 1 - Type - Size (inch) - Cut - 0

HOLE SAWS

SIZE IN MM	ORDERING CODE	Rs. / Piece
14*	3830-14-VIP	538
16*, 17	3830-16-VIP	377
19*	3830-19-VIP	391
20, 21, 22*, 24	3830-20-VIP	398
25*	3830-25-VIP	405
27	3830-27-VIP	482
28	3830-28-VIP	439
29, 30*, 32*	3830-29-VIP	482
33	3830-33-VIP	517
35	3830-35-VIP	517
37, 38*	3830-37-VIP	524
40	3830-40-VIP	633
41	3830-41-VIP	637
44	3830-44-VIP	657
46	3830-46-VIP	681
48	3830-48-VIP	713
50*	3830-50-VIP	723
51	3830-51-VIP	678
52	3830-52-VIP	798
54	3830-54-VIP	811
55	3830-55-VIP	755
56	3830-56-VIP	775
57	3830-57-VIP	880
64	3830-64-VIP	992
65	3830-65-VIP	1,009
67	3830-67-VIP	1,068

SIZE IN MM	ORDERING CODE	Rs. / Piece
68	3830-68-VIP	1,079
70	3830-70-VIP	1,119
76	3830-76-VIP	1,230
83, 86	3830-83-VIP	1,342
89	3830-89-VIP	1,419
92	3830-92-VIP	1,470
95	3830-95-VIP	1,523
98	3830-98-VIP	1,593
102	3830-102-VIP	1,746
105	3830-105-VIP	1,663
108	3830-108-VIP	1,803
111	3830-111-VIP	2,082
114	3830-114-VIP	2,222
121	3830-121-VIP	2,502
160	3830-160-VIP	3,112
190	3830-190-VIP	3,377
210	3830-210-VIP	3,764

ARBOR

ITEM	Range (mm)	Shank Size	List Price	PKT. QTY.
3834-ARBR-630*	14 - 30	6.4	416	1
3834-ARBR-930*	14 - 30	8.5	416	1
3834-ARBR-9100*	32 - 100	8.5	900	1
3834-ARBR-11152*	32 - 210	11.1	900	1
3834-ARBR-16152	32 - 210	15.4	946	1



HAND HACKSAW FRAMES				HANDSAWS		
SIZE	MODEL	PRICE Rs. / Piece	PKT. QTY.	MODEL	PRICE Rs. / Piece	PKT. QTY.
12"	225 - S*	866	1	AP 06 20"	380	1
12"	317	776	1	AP 06 22**	430	1
12"	306*	415	1	AP 06 24"	506	1

BIMETAL BANDSAWS BLADES

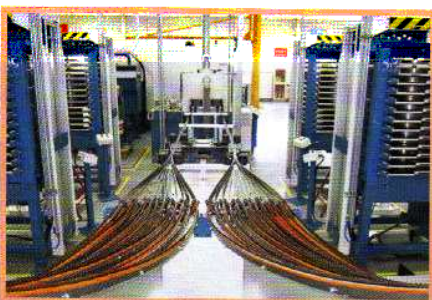


GRADE	SIZE	TEETH (TPI)	Price Including Excise		PKT. QTY.
			Price per Mtr 3900/3851	Price Per Mtr-3900S	
3900- Aluminium	20 X 0.90	HA3*	637	669	8
	27 X 0.90	HA3*	659	691	8
3851-PR/ 3900-KS: SANDFLEX COBRA (M42)	20 X 0.90	4/6*, 5/8*, 6/10*, 8/12, 10/14	749	786*	8
	27 X 0.90	2/3, 3/4*, 4/6*, 5/8*, 6/10, 8/12	841	883*	8
	34 X 1.10	2/3, 3/4*, 4/6*, 5/8, 6/10	954	1,002*	5
	41 X 1.30	4/6, 3/4, 2/3	1,252	1,315	5
	54 X 1.60	2/3, 1.4/2.0, 3/4	1,849	1,942	2
	67 X 1.60	1.4/2, 1.0/1.4, 0.7/1.0	2,499	2,624	2
	80 X 1.60	-	3,868	-	1
3900-PF: SANDFLEX "TOP" fabricator (tubes & profiles)	27 X 0.90	3/4*, 4/6*, 5/8*	841*	883	8
	34 X 1.10	2/3, 3/4, 4/6*, 5/8	954	1,002*	5
	41 X 1.30	2/3, 3/4, 4/6*, 5/8	1,304*	1,369*	5
3854- PHG: SANDFLEX KING COBRA (SPECIAL HSS)	27 X 0.90	4/6, 3/4	908	-	8
	34 X 1.10	4/6, 3/4, 2/3	1,060	-	5
	41 X 1.30	1.4/2, 2/3, 3/4	1,395	-	5
	54 X 1.60	1.4/2, 2/3	2,078	-	2
	67 X 1.60	2/3, 1.4/2, 0.7/1.0	2,499	-	2
3857/3900: EASY CUT (M42)	20 X 0.90	L, M, S	749*	786	8
	27 X 0.90	L, M, S	841*	881	8
	34 X 1.10	L, M, S	954*	1,002	5
3868: CARBIDE TRIPLE SET "EXTRA"	34 X 1.10	2/3*	3,611	-	5
	34 X 1.10	3/4	6,025	-	5
	41 X 1.30	1.4/2	7,239	-	5
	41 X 1.30	2/3*	3,948	-	5
	41 X 1.30	3/4	4,713	-	5
	54 X 1.60	1/1.25	5,181	-	2
	54 X 1.60	2/3	5,441	-	2
	67 X 1.60	1/1.25	6,485	-	2
	67 X 1.60	1.4/2	6,769	-	2
3869: CARBIDE TRIPLE SET	20 X 0.90	3	6,083	-	8
	27 X 0.90	3	3,675	-	8
	27 X 0.90	4	5,318	-	8

Ordering Code - Grade - Size - Type - TPI - Length

Advisory - Items marked with * are available Ex-Stock. For all other items, please confirm MOQ and delivery period with company before booking the order.

Bahco products are manufactured in the best factories of the world.



Terms & Conditions:

1. All rates are inclusive of excise duty and cess.
2. Government (Central, State & Local) taxes, Octroi duty and other levies will be charge extra, as applicable at the time of despatch.
3. Prices and specifications are subject to change without notice.
4. For the price of other Bahco products, please contact our authorised distributor.

