

Hand Tools



Terms & Conditions:

1. These are the current prices and supersede all previous price lists.
2. Prices are subject to alteration without notice and all pending orders, if any, will be invoiced at the rates ruling on the date of delivery.
3. Dealers are free to charge lower than the Maximum Recommended Retail Prices.
4. All Legal Proceedings are subject to Mumbai Jurisdiction.

* MRP/Unit = Price in Rs. 1No./Price in Rs. Per Set.

Authorised Dealer

PRICE LIST
15th DECEMBER, 2012



JK Files (India) Limited

(A Subsidiary of Raymond Limited)

Regd. Off.: New Hind House, N.M. Marg,
Ballard Estate, Mumbai - 400 001.

Sales Off.: P.O. Jekegram, Thane - 400 606,
Maharashtra, India.

Phone : (+91-22) 6152 7000

Fax : (+91-22) 6152 8819/20

Email : jkfilesales@raymond.in

www.jkfilesandtools.com

Power Tools Accessories



JK Files (India) Limited

(A Subsidiary of Raymond Limited)



COMBINATION PLIER

JK Code	Size (inch)	Size (mm)	Std Pkg. (Pc)	Mas. Pkg. (Pc)	M.R.P./Unit ₹
66861	6	170	10	80	180.00
66860	8	206	10	60	222.00

- Conforming to IS: 3650:1981
- Tested for quality: As per IS-2615-1981
- Chrome Vanadium Steel



REGULAR PLIER

JK Code	Size (inch)	Size (mm)	Std Pkg. (Pc)	Mas. Pkg. (Pc)	M.R.P./Unit ₹
66893	6	150	5	80	165.00
66892	8	200	5	60	195.00

- Conforming to IS:6078-1986
- Made of High Grade Steel
- Slip free Comfort Grip Handle



SIDE CUTTING PLIER

JK Code	Size (inch)	Size (mm)	Std Pkg. (Pc)	Mas. Pkg. (Pc)	M.R.P./Unit ₹
66870	6	150	5	80	165.00

- Conforming to IS:4378 - 1990
- Chrome Vanadium Steel
- Slip free Comfort Grip Handle



LONG NOSE PLIER (SOFT GRIP SLEEVE)

JK Code	Size (inch)	Size (mm)	Std Pkg. (Pc)	Mas. Pkg. (Pc)	M.R.P./Unit ₹
66840	6	150	5	80	180.00

- Conforming to IS: 5658:1990
- Chrome Vanadium Steel



LONG NOSE PLIER (RED SLEEVE)

JK Code	Size (inch)	Size (mm)	Std Pkg. (Pc)	Mas. Pkg. (Pc)	M.R.P./Unit ₹
66830	6	150	5	80	165.00

- Conforming to IS: 5658:1990
- Chrome Vanadium Steel



WIRE STRIPPER

JK Code	Size (inch)	Size (mm)	Std Pkg. (Pc)	Mas. Pkg. (Pc)	M.R.P./Unit ₹
66922	6	150	10	300	60.00

- Conforming to IS:5087-1969
- Nickel Chrome Plated Spring
- Induction Hardened Cutter
- Cellulose Acetate Sleeve for FIRM grip



WATER PUMP PLIER (BOX TYPE)

JK Code	Size (inch)	Size (mm)	Std Pkg. (Pc)	Mas. Pkg. (Pc)	M.R.P./Unit ₹
66800	10	250	10	60	225.00

- Conforming to IS: 6118-1991
- Made of High Grade Steel
- Slip free Comfort Grip Handle

PIPE WRENCH (STILLSON TYPE)

Product Description	JK Code	Size (inch)	Size (mm)	Std Pkg. (Pc)	Mas. Pkg. (Pc)	M.R.P./Unit ₹
Pipe Wrench (Stillson Type)	65462	12	300	6	24	298.00
with Corrugated Box	65463	14	350	6	18	352.00
	65464	18	450	6	12	580.00
	65465	24	600	6	6	1060.00

Pipe Wrench (Stillson Type)	65452	12	300	6	24	365.00
with Canvas Bag	65453	14	350	6	18	425.00
	65454	18	450	6	12	678.00
	65455	24	600	6	6	1190.00

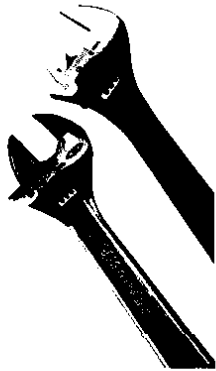
- Conforming to IS: 4003 - 1978
- Drop forged high grade steel
- Anti-slip handle for comfort grip
- Induction hardened jaws
- Unique double spring system



ADJUSTABLE WRENCH

Product Description	JK Code	Size (inch)	Size (mm)	Std Pkg. (Pc)	Mas. Pkg. (Pc)	M.R.P./Unit ₹
Phosphate Finish	65407	6	155	10	120	150.00
	65408	8	205	10	80	198.00
	65409	10	255	10	40	266.00
	65410	12	305	10	40	365.00
Satin Finish	65400	6	155	10	120	182.00
	65401	8	205	10	80	248.00
	65402	10	255	10	40	312.00
	65403	12	305	10	40	390.00

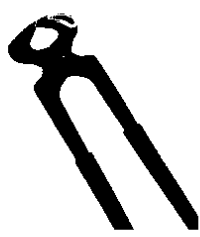
- Conforming to IS: 6149-1984
- Heavy duty handle & special screw for smooth knurling
- Laser marked measurement scale for indicating correct jaw opening



CARPENTER PINCER

JK Code	Size (inch)	Size (mm)	Std Pkg. (Pc)	Mas. Pkg. (Pc)	M.R.P./Unit ₹
66944	8	200	10	60	198.00

- Conforming to IS: 4095 - 1991



FINE GRAINED IRON JACK PLANE

Product Description	JK Code	Size (blade)	Size (length)	Std Pkg. (Pc)	Mas. Pkg. (Pc)	M.R.P./Unit ₹
STD 4 No.	68820	50	250	1	12	695.00
STD 5 No.	68821	50	355	1	10	925.00
STD 6 No.	68822	60	450	1	8	1360.00

- Conforming to IS: 15385 - 2003
- Brass Nuts & Brass Adjusting Screws- Anti Rust and long lasting
- Induction hardened cutting blade
- Body made of Fine Grey Iron Casting

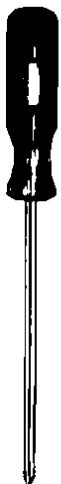


○ FLAT TIP SCREW DRIVER ENGINEER'S PATTERN



JK Code	Blade Dia (mm)	Blade Length (mm)	Tip Dimension (mm)	Std Pkg. (Pc)	M.R.P./Unit ₹
F02075	2	075	2.0 x 0.4	10	28.00
F02100	2	100	2.0 x 0.4	10	30.00
F03075	3	075	3.0 x 0.5	10	32.00
F03100	3	100	3.0 x 0.5	10	35.00
F03150	3	150	3.0 x 0.5	10	38.00
F03200	3	200	3.0 x 0.5	10	42.00
F03250	3	250	3.0 x 0.5	10	44.00
F04075	4	075	4.0 x 0.6	10	40.00
F04100	4	100	4.0 x 0.6	10	42.00
F04150	4	150	4.0 x 0.6	10	44.00
F04200	4	200	4.0 x 0.6	10	46.00
F04250	4	250	4.0 x 0.6	10	52.00
F05075	5	075	5.0 x 0.7	10	48.00
F05100	5	100	5.0 x 0.7	10	50.00
F05150	5	150	5.0 x 0.7	10	52.00
F05200	5	200	5.0 x 0.7	10	55.00
F05250	5	250	5.0 x 0.7	10	58.00
F05300	5	300	5.0 x 0.7	10	62.00
F06100	6	100	6.0 x 0.9	10	55.00
F06150	6	150	6.0 x 0.9	10	58.00
F06200	6	200	6.0 x 0.9	10	64.00
F06250	6	250	6.0 x 0.9	10	68.00
F06300	6	300	6.0 x 0.9	10	80.00
F08150	8	150	8.0 x 1.0	10	92.00
F08200	8	200	8.0 x 1.0	10	96.00
F08250	8	250	8.0 x 1.0	10	104.00
F08300	8	300	8.0 x 1.0	10	108.00
F08350	8	350	8.0 x 1.0	10	118.00
F10200	10	200	10.0 x 1.4	10	154.00
F10250	10	250	10.0 x 1.4	10	160.00
F10300	10	300	10.0 x 1.4	10	175.00
F10350	10	350	10.0 x 1.4	10	188.00
F10400	10	400	10.0 x 1.4	10	196.00
F10450	10	450	10.0 x 1.4	10	206.00

• Conforming to IS: 844-1979



⊕ PHILLIPS HEAD SCREW DRIVER

JK Code	Blade Dia (mm)	Blade Length (mm)	Tip Dimension (mm)	Std Pkg. (Pc)	M.R.P./Unit ₹
P02075	2	075	0	10	32.00
P02100	2	100	0	10	36.00
P03075	3	075	0	10	38.00
P03100	3	100	0	10	42.00
P03150	3	150	0	10	42.00
P03200	3	200	0	10	46.00
P04075	4	075	0	10	48.00
P04100	4	100	0	10	50.00
P04150	4	150	0	10	52.00
P04200	4	200	0	10	55.00
P05100	5	100	1	10	55.00
P05150	5	150	1	10	58.00
P05200	5	200	1	10	60.00
P05250	5	250	1	10	66.00
P06100	6	100	2	10	78.00
P06150	6	150	2	10	80.00
P06200	6	200	2	10	82.00
P06250	6	250	2	10	84.00
P06300	6	300	2	10	94.00
P08150	8	150	3	10	108.00
P08200	8	200	3	10	110.00
P08250	8	250	3	10	118.00
P08300	8	300	3	10	128.00

• Conforming to IS: 844-1979 and Geometry of Phillips Head as per BS : 2559-1994

○ HAMMER TYPE SCREW DRIVER

JK Code	Blade Dia (mm)	Blade Length (mm)	Tip Dimension (mm)	Std Pkg. (Pc)	M.R.P./Unit ₹
H08150	8	150	8.0 x 1.0	10	145.00
H08200	8	200	8.0 x 1.0	10	148.00
H08250	8	250	8.0 x 1.0	10	154.00
H08300	8	300	8.0 x 1.0	10	160.00
H08350	8	350	8.0 x 1.0	10	165.00

• Conforming to IS: 844-1979

⊕ ELECTRICAL PATTERN WITH INSULATED SLEEVE

JK Code	Blade Dia (mm)	Blade Len. (mm)	Tip Dimension (mm)	Std Pkg. (Pc)	M.R.P./Unit ₹
M05100	5	100	5.0 x 0.7	10	55.00
M05150	5	150	5.0 x 0.7	10	58.00
M05200	5	200	5.0 x 0.7	10	66.00
M05250	5	250	5.0 x 0.7	10	68.00

⊕ ⊕ DOUBLE ENDER

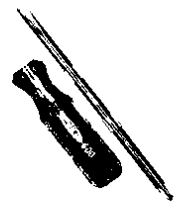
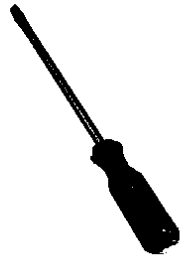
Product Description	Blade Dia (mm)	Blade Len. (mm)	Tip Dimension (mm)	Std Pkg. (Pc)	M.R.P./Unit ₹
Small DE600	6	145	6.0 x 0.9	10	78.00
Large DE601	6	190	6.0 x 0.9	10	80.00
Extra Long DEXL601	6	315	6.0 x 0.9	10	96.00

⊕ SCREW DRIVER WITH NEON BULB 500 V

Product Description	Blade Dia (mm)	Blade Len. (mm)	Tip Dimension (mm)	Std Pkg. (Pc)	M.R.P./Unit ₹
Regular Tester 602	3	125	3.0 x 0.5	20	48.00
Regular Tester 603	3	130	3.0 x 0.5	20	58.00
Hvy. Duty Tester 604	4	190	4.0 x 0.6	20	68.00

⊕ ⊕ SCREW DRIVER SET WITH NEON BULB 500 V

Product Description	Type & Dimension (mm)	Std Pkg. (Pc)	M.R.P./Unit ₹
Electric Set With Extension 608	F 6 x 0.9, 5 x 0.7, 3 x 0.5 Philip No. 2, 1 & 0 Round Poker, Extn. Blade	10	268.00
Electric Set 605	F 6 x 0.9, 3 x 0.5, Philip No. 2, 1 & Square Poker	10	175.00



HEX ALLEN KEYS - STANDARD SERIES

JK Code	M.R.P./Unit ₹	Tip Size (mm)	Length (mm)	Std Pkg. (Pc)	JK Code	M.R.P./Unit ₹
Satin Finish				Black Finish		
68000	8.00	1.5	45	20	68020	6.00
68001	9.00	2.0	50	20	68021	7.00
68002	10.00	2.5	56	20	68022	8.00
68003	11.00	3.0	63	20	68023	9.00
68004	14.00	4.0	70	20	68024	12.10
68005	20.00	5.0	80	20	68025	16.00
68006	24.00	6.0	90	20	68026	23.10
68007	42.00	8.0	100	10	68027	40.00
68008	68.00	10.0	112	10	68028	58.00

HEX ALLEN KEYS SET (9 PCS.) - STANDARD SERIES

JK Code	M.R.P./Unit ₹	Tip Size (mm)	Std Pkg. (Pc)	JK Code	M.R.P./Unit ₹
Satin Finish		Black Finish			
68000	182.00	1.5, 2, 2.5, 3, 4, 5, 6, 8, 10	10	68039	196.00

HEX ALLEN KEYS - LONG BALL POINT SERIES

JK Code	M.R.P./Unit ₹	Tip Size (mm)	Length (mm)	Std Pkg. (Pc)	JK Code	M.R.P./Unit ₹
Satin Finish				Black Finish		
68040	20.00	1.5	76	20	68050	19.00
68041	22.00	2.0	82	20	68051	20.00
68042	23.00	2.5	88	20	68052	22.00
68043	25.00	3.0	98	20	68053	23.00
68044	31.00	4.0	104	20	68054	29.00
68045	42.00	5.0	115	20	68055	40.00
68046	46.00	6.0	138	20	68056	44.00
68047	68.00	8.0	156	10	68057	64.00
68048	115.00	10.0	168	10	68058	110.00

HEX ALLEN KEYS SET (9 PCS.) - LONG BALL POINT SERIES

JK Code	M.R.P./Unit ₹	Tip Size (mm)	Std Pkg. (Pc)	JK Code	M.R.P./Unit ₹
Satin Finish		Black Finish			
68049	341.00	1.5, 2, 2.5, 3, 4, 5, 6, 8, 10	10	68059	308.00

• Made of High grade steel • Conforming to IS 3082 - 1988

C - CLAMP

JK Code	Size (inch)	Size (mm)	Weight (Gms)	Mas. Pkg. (Pc)	M.R.P./Unit ₹
41000	2	50	370	60	248.00
41001	3	75	625	40	340.00
41002	4	100	875	25	470.00
42003	6	150	1830	10	685.00
42004	8	200	2700	8	1065.00

• JK C - Clamp conforms to IS 9181-1988
 • Drop forged form high grade steel
 • Swivel pad for better angular grip

DOUBLE OPEN ENDED SPANNER

JK Code	Length (mm)	Std Pkg. (Pc)	Mas. Pkg. (Pc)	M.R.P./Unit ₹
65101	6 x 7	10	1000	21.00
65102	8 x 9	10	800	22.00
65103	10 x 11	10	600	25.00
65104	12 x 13	10	400	30.00
65105	14 x 15	10	300	31.00
65106	16 x 17	10	250	40.00
65107	18 x 19	10	150	52.00
65108	20 x 22	10	150	64.00
65109	21 x 23	05	120	82.00
65114	22 x 24	05	120	90.00
65112	24 x 26	05	80	98.00
65111	24 x 27	05	80	98.00
65110	25 x 28	05	80	116.00
65115	30 x 32	05	60	132.00
65120	32 x 36	02	50	282.00
65121	36 x 41	02	50	360.00
65122	41 x 46	02	30	484.00
65123	46 x 50	02	30	745.00
65124	50 x 55	02	30	1220.00

JK Code	Length (mm)	Std Pkg. (Pc)	Mas. Pkg. (Pc)	M.R.P./Unit ₹
65200	3/16 x 1/4	10	400	31.00
65201	1/4 x 5/16	10	300	32.00
65202	5/16 x 7/16	10	150	54.00
65203	7/16 x 9/16	5	80	100.00
65204	9/16 x 11/16	5	80	132.00

DOUBLE OPEN ENDED SPANNER SETS

JK Code	Length (mm)	Std Pkg. (Pc)	M.R.P./Unit ₹
65117	8 Pcs set (6x7, 8x9, 10x11, 12x13, 14x15, 16x17, 18x19, 20x22)	10	288.00
65118	10 Pcs set (6x7, 8x9, 10x11, 12x13, 14x15, 16x17, 18x19, 20x22, 21x23, 24x27)	10	460.00
65119	12 Pcs set (6x7, 8x9, 10x11, 12x13, 14x15, 16x17, 18x19, 20x22, 21x23, 24x27, 25x28, 30x32)	10	700.00

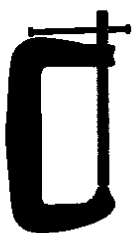
RING SPANNER

JK Code	Length (mm)	Std Pkg. (Pc)	Mas. Pkg. (Pc)	M.R.P./Unit ₹
65600	6 x 7	10	400	46.00
65601	8 x 9	10	300	54.00
65602	10 x 11	10	250	60.00
65603	12 x 13	10	200	64.00
65604	14 x 15	10	150	74.00
65605	16 x 17	10	120	88.00
65606	18 x 19	10	120	105.00
65607	20 x 22	05	80	124.00
65608	21 x 23	05	60	148.00
65641	22 x 24	05	60	166.00
65609	24 x 27	05	40	174.00
65610	25 x 28	05	40	218.00
65611	30 x 32	05	40	278.00

RING SPANNER SETS

JK Code	Length (mm)	Std Pkg. (Pc)	M.R.P./Unit ₹
65612	8 Pcs set (6x7, 8x9, 10x11, 12x13, 14x15, 16x17, 18x19, 20x22)	10	594.00
65613	10 Pcs set (6x7, 8x9, 10x11, 12x13, 14x15, 16x17, 18x19, 20x22, 21x23, 24x27)	10	898.00
65614	12 Pcs set (6x7, 8x9, 10x11, 12x13, 14x15, 16x17, 18x19, 20x22, 21x23, 24x27, 25x28, 30x32)	10	1390.00

• High quality drop forged • Chrome Vanadium Steel • Precision Hardened & Heat Treated

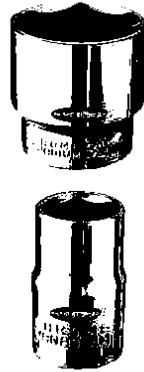




Instrumental in your success

HEX & BI-HEX SOCKETS (1/2" SQUARE DRIVE)

JK Code Hex	Size (mm)	Std Pkg. (Pc)	M.R.P./Unit ₹	JK Code Bi-Hex
68700	8	10	48.00	68750
68701	9	10	48.00	68751
68702	10	10	48.00	68752
68703	11	10	48.00	68753
68704	12	10	52.00	68754
68705	13	10	52.00	68755
68706	14	10	52.00	68756
68707	15	10	52.00	68757
68708	16	10	52.00	68758
68709	17	10	62.00	68759
68710	18	10	62.00	68760
68711	19	10	62.00	68761
68712	20	10	70.00	68762
68713	21	10	70.00	68763
68714	22	10	78.00	68764
68715	23	10	86.00	68765
68716	24	10	90.00	68766
68717	26	10	110.00	68767
68718	27	10	118.00	68768
68719	28	10	140.00	68769
68720	29	10	144.00	68770
68721	30	10	160.00	68771
68723	32	10	165.00	68772



27 PCS SOCKETS SET (1/2" SQUARE DRIVE)

27 Pcs. Set	JK Code	Contents for Hex & Bi-Hex	M.R.P./Unit ₹
Hex	68740	1 Pc. Each of 1/2" Socket: 8,9,10, 11,12,13,14,15,16,17,18,19, 20,21,22,23,24,27,30,32mm;	3450.00
Bi-Hex	68790	Extension Bar: 125 & 250 mm; Sliding T-Bar : 250mm, 1/2" Drive Spark Plug: 16 & 21 mm, Universal Joint: 75 mm, Reversible Ratchet: 255 mm	3450.00



SOCKET ACCESSORIES (1/2" SQUARE DRIVE)

Product Description	JK Code	Length (mm)	Std Pkg. (Pc)	M.R.P./Unit ₹
Reversible Ratchet Handle	68800	255	1	585.00
Flexible Handle	68801	250	1	480.00
Extension Bar	68814	75	5	150.00
	68802	125	5	185.00
	68803	250	5	240.00
Sliding T-Bar	68804	300	1	310.00
	68815	250	1	245.00
L-Handle	68805	250	1	335.00
	68813	300	1	380.00

Product Description	JK Code	Size (Inch)	Std Pkg. (Pc)	M.R.P./Unit ₹
Socket Adaptor	68807	1/2"M x 3/4"F	5	200.00
	68808	3/4"M x 1/2" F	5	195.00
	68809	1/2"M x 3/8"F	5	95.00
	68810	3/8"M x 1/2"F	5	95.00

Product Description	JK Code	Drive (mm)	Std Pkg. (Pc)	M.R.P./Unit ₹
Spark Plug Socket	68811	16	5	100.00
	68812	21	5	130.00

Product Description	JK Code	Length (mm)	Std Pkg. (Pc)	M.R.P./Unit ₹
Universal Joint	68806	75	5	225.00



Instrumental in your success

CLAW HAMMER AMERICAN TYPE TUBULAR STEEL HANDLE WITH RUBBER GRIP

JK Code	Weight (gm)	Std Pkg. (Pc)	Mas. Pkg. (Pc)	M.R.P./Unit ₹
67001	250	2	60	248.00

CLAW HAMMER AMERICAN TYPE WITH WOODEN HANDLE

JK Code	Weight (gm)	Std Pkg. (Pc)	Mas. Pkg. (Pc)	M.R.P./Unit ₹
67000	500	2	36	298.00

BALL PEIN HAMMER WITH WOODEN HANDLE

JK Code	Weight (gm)	Std Pkg. (Pc)	Mas. Pkg. (Pc)	M.R.P./Unit ₹
67020	100	6	150	120.00
67021	200	6	72	160.00
67022	300	2	60	195.00
67023	500	2	36	248.00
67024	600	2	30	282.00
67025	800	2	24	336.00

CROSS PEIN HAMMER WITH WOODEN HANDLE

JK Code	Weight (gm)	Std Pkg. (Pc)	Mas. Pkg. (Pc)	M.R.P./Unit ₹
67040	100	6	150	120.00
67041	200	6	72	160.00
67042	300	2	60	195.00
67043	500	2	36	248.00
67044	600	2	30	282.00
67045	800	2	24	336.00

MACHINIST HAMMER WITH WOODEN HANDLE

JK Code	Weight (gm)	Std Pkg. (Pc)	Mas. Pkg. (Pc)	M.R.P./Unit ₹
67100	100	6	144	110.00
67101	200	6	72	150.00
67102	300	6	60	175.00
67104	500	2	36	230.00

SOFT Mallet HAMMER TUBULAR STEEL HANDLE WITH RUBBER GRIP

JK Code	Size (mm)	Length (mm)	Std Pkg. (Pc)	Mas. Pkg. (Pc)	M.R.P./Unit ₹
67160	20	265	4	100	155.00
67161	25	270	4	60	185.00
67162	30	290	4	48	232.00
67163	40	320	2	30	396.00
67164	50	340	2	20	525.00

- Conforming to IS: 10838-1984
- CA Hardened Nylon faced insert for long life
- Mirror polished finish
- Tubular Steel Handle with Rubber grip

SOFT Mallet HAMMER (SPARES)

JK Code	Size (mm)	Length (mm)	Std Pkg. (Pc)	Mas. Pkg. (Pc)	M.R.P./Unit ₹
67170	20	21	10	180	40.00
67171	25	25	10	150	60.00
67172	30	30	10	120	70.00
67173	40	38	10	100	94.00
67174	50	40	10	100	160.00





HandTools

Instrumental in your success



HSS HAND HACK SAW BLADES

JK Code	Nominal Size (mm)	L x W x T (Inch)	TPI	M.R.P./Unit ₹
69500	300 x 12.5 x 0.63	12 x 1/2 x 0.025	18	62.00
69501	300 x 12.5 x 0.63	12 x 1/2 x 0.025	24	62.00

Std. Pkg. (Pc.) : 100 Pcs.



HSS POWER HACK SAW BLADES

JK Code	Nominal Size (mm)	L x W x T (Inch)	TPI	M.R.P./Unit ₹
69502	300 x 25 x 1.25	12 x 1 x 0.050	10	235.00
69503	300 x 25 x 1.25	12 x 1 x 0.050	14	235.00
69504	350 x 25 x 1.25	14 x 1 x 0.050	10	262.00
69505	350 x 32 x 1.6	14 x 1 1/4 x 0.062	6	455.00
69506	350 x 25 x 1.25	14 x 1 x 0.050	14	262.00
69507	400 x 32 x 1.6	16 x 1 1/4 x 0.062	6	526.00
69508	400 x 25 x 1.25	16 x 1 x 0.050	10	345.00
69509	450 x 32 x 1.6	18 x 1 1/4 x 0.062	6	585.00
69510	450 x 25 x 1.25	18 x 1 x 0.050	10	400.00
69511	450 x 32 x 1.6	18 x 1 1/4 x 0.062	10	585.00
69512	450 x 38 x 2	18 x 1 1/2 x 0.75	6	845.00
69513	450 x 38 x 1.6	18 x 1 1/2 x 0.62	6	790.00
69514	450 x 38 x 1.6	18 x 1 1/2 x 0.62	10	790.00
69515	450 x 38 x 2	18 x 1 1/2 x 0.75	10	845.00

Std. Pkg. (Pc.) : 10 Pcs.



Bi-METAL HAND HACK SAW BLADES

JK Code	Nominal Size (mm)	L x W x T (Inch)	TPI	M.R.P./Unit ₹
69550	300 x 12.5 x 0.63	12 x 1/2 x 0.025	18	61.00
69551	300 x 12.5 x 0.63	12 x 1/2 x 0.025	24	61.00

Std. Pkg. (Pc.) : 100 Pcs.

Accessories Pricelist

w.e.f 27th January 2012



HOLE SAW BI-METAL VARIABLE PITCH



* Star marked sizes are only available on request.

JK Code	Diameter (mm)	Diameter (Inch)	M.R.P./Unit ₹	JK Code	Diameter (mm)	Diameter (Inch)	M.R.P./Unit ₹
68610	14*	9/16	340.00	68631	46*	1.13/16	550.00
68611	16*	5/8	340.00	68632	48*	1.7/8	550.00
68612	17*	11/16	340.00	68633	51	2	550.00
68613	19	3/4	350.00	68634	52*	2.1/16	600.00
68614	20	25/32	355.00	68635	54	2.1/8	600.00
68615	21*	13/16	355.00	68636	57*	2.1/4	650.00
68616	22	7/8	355.00	68637	59*	2.5/16	650.00
68617	24*	15/16	355.00	68638	60*	2.3/8	650.00
68618	25	1	350.00	68639	64*	2.1/2	678.00
68619	27	1.1/16	435.00	68653	67	2.5/8	700.00
68620	29	1.1/8	435.00	68647	70*	2.3/4	745.00
68621	30*	1.3/16	435.00	68644	76	3	810.00
68622	32	1.1/4	435.00	68656	80	3.5/32	895.00
68623	33*	1.5/16	445.00	68658	83	3.1/4	895.00
68624	35*	1.3/8	465.00	68662	89	3.1/2	960.00
68625	37*	1.7/16	470.00	68667	100	3.15/16	1070.00
68626	38	1.1/2	470.00	68668	102	4	1090.00
68627	40*	1.9/16	505.00	68670	108	4.1/4	1140.00
68628	41*	1.5/8	505.00	68671	111	4.3/8	1195.00
68629	43*	1.11/16	505.00	68672	114	4.1/2	1230.00
68630	44	1.3/4	525.00				

ARBORS (WITH HSS DRILL)

JK Code	Type	Diameter (mm)	M.R.P./Unit ₹
68640	J1	14 - 30	442.00
68641	J2	32 - 114	770.00



* Recommended accessories for

Impact Drill JKID13 Electric Drill JKED10

SUITABLE FOR
JKID13

SUITABLE FOR
JKED10

- Concrete
- Stainless Steel
- Aluminium
- Wood

- Stainless Steel
- Aluminium
- Wood



POWERING PERFORMANCES



Accessories Pricelist

w.e.f 27th January 2012

FLAT CUTTING DISCS FOR METAL

JK Code	Size	Std. Pkg. (Pc)	M.R.P./Unit ₹
88101	100 x 2.5 x 16	25	36.00
88102	100 x 3.0 x 16	25	36.00
88103	125 x 3.0 x 22.2	25	58.00
88104	180 x 3.0 x 22.2	25	98.00
88105	355 x 2.8 x 25.4	25	268.00

DEPRESSED GRINDING DISCS FOR METAL

JK Code	Size	Std. Pkg. (Pc)	M.R.P./Unit ₹
88201	100 x 4.0 x 16	10	40.00
88202	100 x 6.0 x 16	10	50.00
88203	125 x 5.0 x 22.2	10	72.00
88204	180 x 6.0 x 22.2	10	132.00

SUPER THIN CUTTING DISCS FOR METAL

JK Code	Size	Std. Pkg. (Pc)	M.R.P./Unit ₹
88301	100 x 1.2 x 16	25	36.00

DIAMOND CUTTING BLADES

Product Description	JK Code	Size (mm)	Std. Pkg. (Pc)	M.R.P./Unit ₹
Brickstone-Cut * (Segmented)	65501	110	10	135.00
Grantile-Cut * (Turbo Cutting)	65500	110	10	150.00
Fine-Mould * (Continuous Rim)	65502	110	10	150.00

TCT CIRCULAR SAW FOR ALUMINIUM CUTTING

JK Code	Size (Inch x mm x teeth)	Std. Pkg. (Pc)	M.R.P./Unit ₹
66551	12 x 25.4 x 100T	1	1120.00
66552	12 x 25.4 x 120T	1	1232.00
66553	14 x 25.4 x 100T	1	2020.00
66554	14 x 25.4 x 120T	1	2235.00
66555	16 x 25.4 x 100T	1	2860.00
66556	16 x 25.4 x 120T	1	3025.00



Accessories Pricelist

w.e.f 27th January 2012



TCT CIRCULAR SAW FOR WOOD CUTTING

JK Code	Size (Inch x mm x teeth)	Std. Pkg. (Pc)	M.R.P./Unit ₹
66501*	4 x 20 x 30T	10	140.00
66502*	4 x 20 x 40T	10	155.00
66503*	5 x 20 x 40T	10	175.00
66504	6 x 25.4 x 40T	1	202.00
66505	6 x 25.4 x 60T	1	268.00
66506	7 x 25.4 x 40T	1	232.00
66507	7 x 25.4 x 60T	1	300.00
66508	8 x 25.4 x 40T	1	300.00
66509	8 x 25.4 x 60T	1	340.00
66510	10 x 25.4 x 40T	1	500.00
66511	10 x 25.4 x 60T	1	600.00
66512	12 x 25.4 x 40T	1	705.00
66513	12 x 25.4 x 60T	1	855.00
66514	12 x 25.4 x 80T	1	910.00
66515	12 x 25.4 x 100T	1	970.00
66516	12 x 25.4 x 120T	1	1055.00
66517	14 x 25.4 x 40T	1	1220.00
66518	14 x 25.4 x 60T	1	1245.00
66519	14 x 25.4 x 80T	1	1345.00
66520	14 x 25.4 x 100T	1	1515.00
66521	14 x 25.4 x 120T	1	1685.00



TCT PLATINUM CUT CIRCULAR SAW FOR WOOD CUTTING

JK Code	Size (Inch x mm x teeth)	Std. Pkg. (Pc)	M.R.P./Unit ₹
67501	4 x 20 x 30T	10	212.00
67502	4 x 20 x 40T	10	242.00
67503	5 x 20 x 40T	10	266.00
67504	6 x 25.4 x 40T	10	312.00
67505	6 x 25.4 x 60T	10	432.00
67506	7 x 25.4 x 40T	10	354.00
67507	7 x 25.4 x 60T	10	450.00
67508	8 x 25.4 x 40T	10	462.00
67509	8 x 25.4 x 60T	10	535.00



* Recommended accessories for

Angle Grinder JKAG100

Cut-off Saw JKCS14



Suitable for Metal

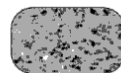


POWERING PERFORMANCES

* Recommended accessories for

Cutter JKC4

SUITABLE FOR



Granite



Kadappa



Tiles



POWERING PERFORMANCES



Accessories Pricelist

s.e.f 27th January 2012

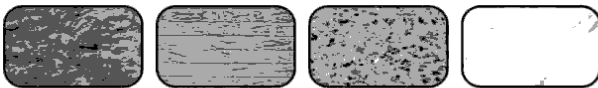
SDS PLUS HAMMER DRILL BITS



JK Code	Diameter x Working Length x Total Length (mm)	Std. Pkg. (Inch)	M.R.P./Unit ₹	JK Code	Diameter x Working Length x Total Length (mm)	Std. Pkg. (Inch)	M.R.P./Unit ₹
55006	5 x 50 x 110	10	75.00	55077	16 x 200 x 260	1	348.00
55007	5 x 100 x 160	10	83.00	55078	16 x 240 x 310	1	420.00
55014	6 x 50 x 110	10	75.00	55084	18 x 100 x 160	1	277.00
55015	6 x 100 x 160	10	83.00	55085	18 x 150 x 210	1	325.00
55020	6.5 x 50 x 110	10	77.00	55086	18 x 200 x 260	1	396.00
55021	6.5 x 100 x 160	10	95.00	55087	18 x 240 x 310	1	468.00
55027	8 x 50 x 110	10	95.00	55096	20 x 200 x 260	1	446.00
55028	8 x 100 x 160	10	105.00	55097	20 x 240 x 310	1	517.00
55037	10 x 100 x 160	1	116.00	55098	20 x 300 x 360	1	567.00
55038	10 x 150 x 210	1	132.00	55099	20 x 340 x 400	1	611.00
55039	10 x 200 x 260	1	160.00	55100	20 x 400 x 460	1	766.00
55047	12 x 100 x 160	1	149.00	55104	22 x 240 x 310	1	693.00
55048	12 x 150 x 210	1	160.00	55105	22 x 300 x 360	1	755.00
55050	12 x 200 x 260	1	183.00	55106	22 x 340 x 400	1	827.00
55051	12 x 240 x 310	1	215.00	55107	22 x 400 x 460	1	913.00
55056	13 x 100 x 160	1	160.00	55111	24 x 240 x 310	1	849.00
55057	13 x 150 x 210	1	193.00	55112	24 x 300 x 360	1	946.00
55058	13 x 200 x 260	1	215.00	55113	24 x 340 x 400	1	1030.00
55059	13 x 240 x 310	1	264.00	55114	24 x 400 x 460	1	1056.00
55061	14 x 100 x 160	1	171.00	55115	25 x 200 x 260	1	781.00
55062	14 x 150 x 210	1	231.00	55116	25 x 240 x 310	1	875.00
55064	14 x 200 x 260	1	264.00	55117	25 x 300 x 360	1	968.00
55065	14 x 240 x 310	1	303.00	55118	25 x 340 x 400	1	1056.00
55074	16 x 100 x 160	1	264.00	55119	25 x 400 x 460	1	1098.00
55075	16 x 150 x 210	1	314.00				

SDS Plus Hammer Drill Bits

SUITABLE FOR



Hard Masonry

Bricks

Granite

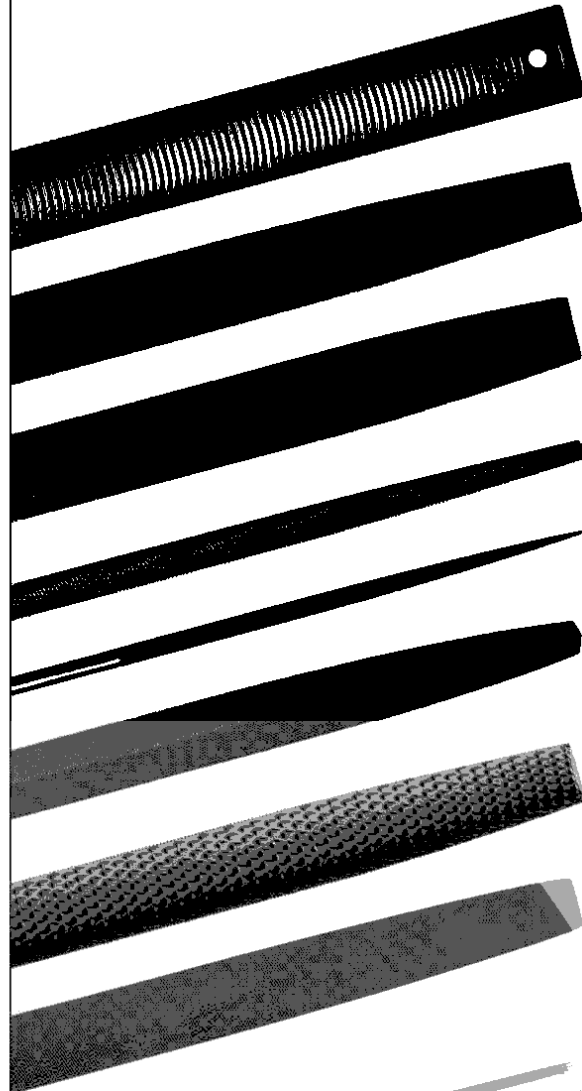
Tile



POWERING PERFORMANCES



Our Brands



**WORLD'S LARGEST
FILE PRODUCER**

**INDIA'S LARGEST HSS GROUND FLUTE
DRILL PRODUCER**

